



Apex Primary School

*Helping little feet climb mountains...*

# SCHOOL NEWSLETTER

Welcome back to a NEW TERM



## DATES FOR YOUR DIARY

Walk to school  
Commencing on Monday 30th  
September

Qur'aan day  
Wednesday 16th October

Last Day of school  
Friday 25th October

First day back  
Monday 4th November

Term 3 fees due  
15th December

Autumn Term 1. Issue 1.

Thursday 26th September  
2024

22nd Rabi'ul Awal 1446 AH

Address: 60- 62 Argyle Road,  
Ilford, Essex, IG1 3BG

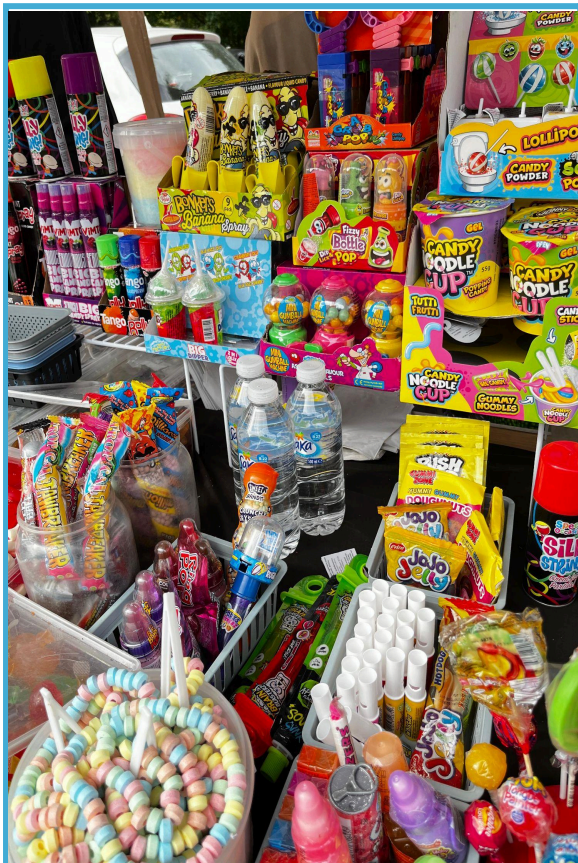
Telephone: 020 8554 1208

Website:  
[www.apexprimary.co.uk](http://www.apexprimary.co.uk)

Email:  
[contact@apexprimary.co.uk](mailto:contact@apexprimary.co.uk)

# Annual Caravanserai 2024 (Hargreaves)

Alhamdulillah we managed to raise an astonishing  
£3,884.68 for our 2024 Hargreaves event!  
Jazakallahu-Khairan to EVERYONE who helped  
make this happen, your actions do not go  
unnoticed.



## Communication with School

Please email us on: [contact@apexprimary.co.uk](mailto:contact@apexprimary.co.uk) if you have any safeguarding concerns or general queries. Anything relating to your child's learning, please message your child's class teacher via Class Dojo. Please note that Admin do not correspond via Class Dojo, please email the school for that. We also ask Parents to kindly allow 3 working days for us to respond back. If there is an emergency, please call the landline from 8:15am - 3:30pm.

## Absences

If your child is absent for whatever reason, please contact the school via:

<http://apexprimary.co.uk/home/parents/student-absence-form/>

to confirm their absence. Please note that if we are not informed by 10am that day, your child will be marked as unauthorised.

## Headteacher drop in sessions

We offer headteacher drop in sessions every Monday from 2:30pm - 3:30pm. These do not need to be pre-booked, however please email the school prior if you would like to have a meeting.

## School phone

We do not respond to any text messages or calls as our school phone is used for outgoing communication only. Should you have any questions or concerns, please email the school or call the school landline. Our school office hours are Monday - Friday from 8:15am until 3:00pm.

## Holidays

Holidays will not be authorised during term time unless there are exceptional circumstances which have to be authorised by the school at least 4 weeks in advance (unless it's an emergency).

More information is on our website under Policies. Alternatively, please click on the following link:

<://www.apexprimary.co.uk/assets/Documents/Attachments/Attendance-and-Punctuality-Policy-Feb-2025.pdf>

## 'NO NUTS'

We are a strict NO NUT school.

Please refrain from giving your child any type of nuts or food containing nuts. If your child is seen with nuts during their snack or lunch break it will be removed from them and disposed safely.

## Park & Walk Policy

Every morning, staff assist pupils out of cars and into the school, however if you wish to bring your child into school yourself, then please park appropriately and safely in a suitable spot such as a parking bay. Please refrain from parking in front of driveways as this is inconsiderate to the neighbours and the community.

You can refer to our policy below for more information:

<https://www.apexprimary.co.uk/assets/Documents/Attachments/Traffic-Calming-Park-and-Walk-Policy-Feb-2024.pdf>



STARS

Getting young London moving

After successfully obtaining the Eco-school Green flag of 2023/24, we are very blessed to be part of the Eco-schools for another year! Our school shura council members will be taking part leading the Eco-team and assisting in all the exciting projects we have planned until July.



Masha-Allah to our school council members this year:

- Musa Hamid & Safiyyah Ahsan in Y1
- Nusaybah Mahmood & Sulayman Butt in Y2
- Rayhaan Mamode & Sumayyah Patel in Y3
- Maryam Mannan & Ayyub Abdurahman in Y4
- Nooh Ahmed & Aayah Bukenya in Y5
- Abiha Khan & Rayan Mohamed in Y6



Did you know?

- The average adult will walk 65,000 in their lifetime which is the equivalent of walking 3 times around the world!
- It requires 200 muscles just to take one step.



This year we will be focusing more on how we can improve better as a School. We will be aiming to hold School Shura Council meetings every two weeks to discuss about our issues and targets.



*We will be starting our Walk to school badges from Monday 30th September. For every 3 walks, cycles or scoots your child does (that constitutes to 10 minutes or more) in the week, your child will receive one badge. If your child is able to receive 3 out of 4 badges in a month, they will receive a whopping 10 Class Dojo points! So get walking, get scooting and get cycling to school!*